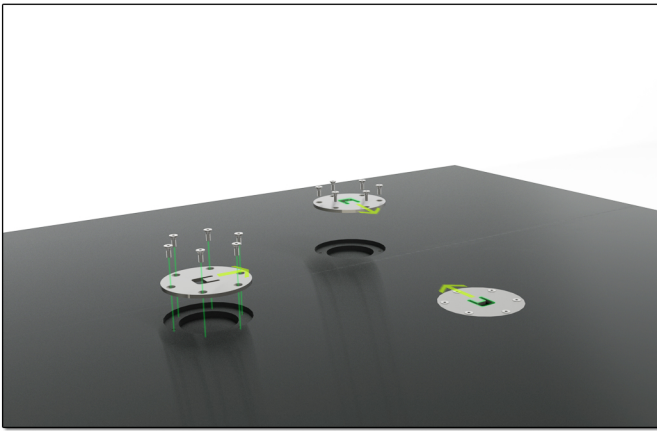


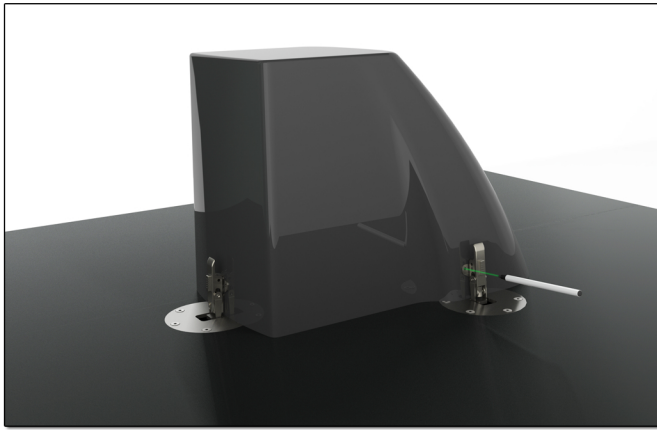


Mounting instructions

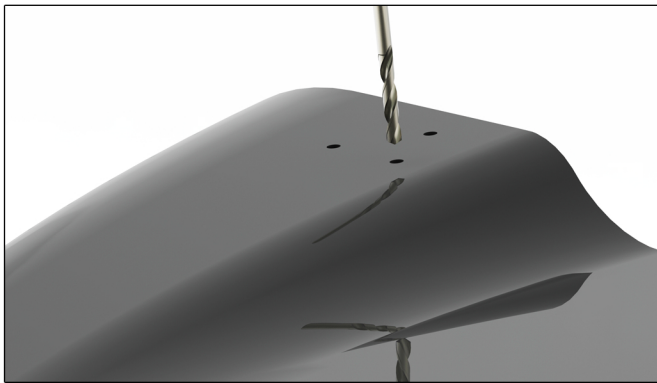
Eccentric tie down points



1: Place the fixture plates in position on deck. Each plate fastens with 6x M6 counter sunk. Place the plates with the "U" shape facing inwards (towards the pedestal)



2: Place the jockey pedestal over the plates. The pedestal overlaps the plates equally. Place the eccentric locks in a tight position and mark the three holes per lock on the pedestal.



3: Drill the marked holes. The lower holes may require counter sinking the internal flange for placement of washers and nuts.



4: Mount the eccentric locks with 3x M4 bolts / lock. Mount in combination with large washers inside the pedestal.

The pedestal can now be mounted to the deck. For optimal friction grip, mount the seat with a dry connection surface. Fasten the eccentric lock firmly using the internal adjustment bolt.