

# PATROL

XLT 00 WITH MK3 STORAGE BASE



PROTECTING  
PEOPLE



Designed to protect the crew and passengers of high-performance craft from injury. Geometry gives optimal body posture for handling both static and dynamic loads. 3D Spring and damping system significantly reduce the high forces during impact, in all three dimensions.

Increased seat padding thickness

Widened seat surface

Longer seat pad for a better fit with survival/ life jacket.

Ullman Semi Active Progressive Shock Mitigation System with progressive damper.

Lateral supports for legs and hips

Seat design puts users in a most active position.

Can be accessorized according to troop requirements.

Twin grab handles for users seated behind

Storage base with 36 liter volume

Performance Features

Weight standard: 24 kg

Width overall: 400 mm

Length overall: 657 mm

Height: 1185 mm

Footprint on deck:

150 mm vertical travel

Spring unit: Stainless steel, acid-proof, SS EN 1.4462 Duplex grade.

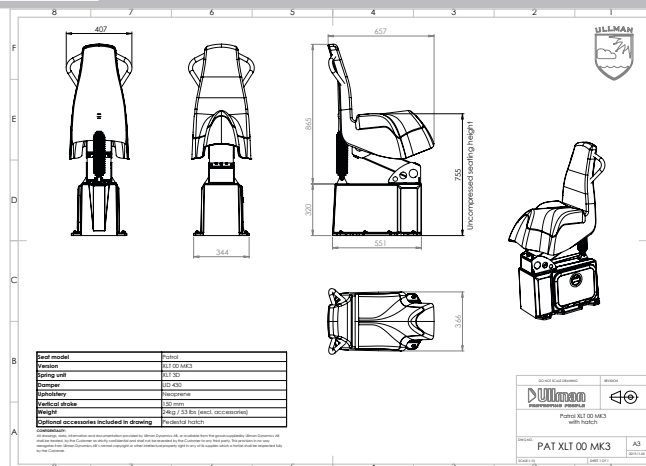
Fasteners: Super duplex grade with Geomet coating.

Leaf springs: Multi-directional hybrid fiber composite.

Technical Data

## Available with:

- 2-point air tech safty belt
- Cargo tracks
- Quick-release options
- Deck insert bolts
- Front seat handle
- Narrow handles
- Heat coated handles
- Coated metal parts for glare, thermal and friction optimization.
- Protection covers with or without Molle
- 6 level adjustable damper
- Foldable footrest



Options and Accessories

Dimensions and Weight